



COOLER RCX-Z2

USER Manual

www.rosewill.com

Thank you for purchasing a High-Quality Rosewill Product.

Please register your product at : www.rosewill.com
for complete warranty information and future support for your product.
If you have any question while using our products, please visit our website : www.rosewill.com
for latest driver & user manual or feel free to contact us at feedback@rosewill.com

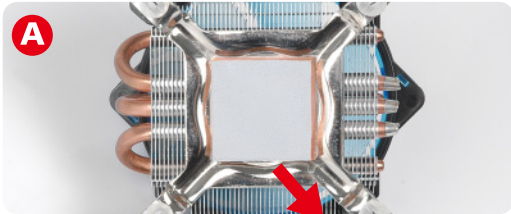
Support Email: techsupport@rosewill.com

Installation instruction

⚠ WARNING

Improper Installation will result in damage to the processor. Never switch on the computer system until the fan is connected on to the motherboard power connector.

STEP 1 >

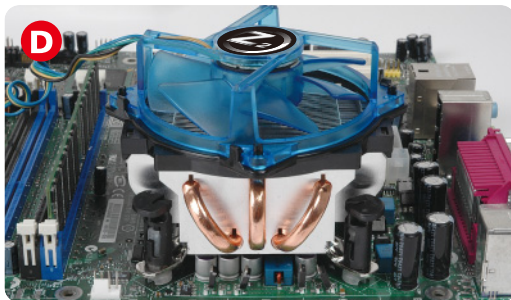
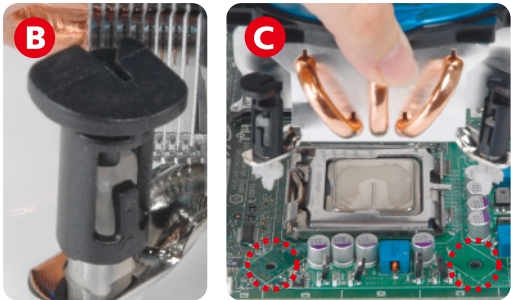


Grey thermal grease

Pre-installation

Ensure the surface of the CPU die is perfectly clean. Please apply our hi-performance thermal grease from the tube in box to the copper base of RCX-Z2. This procedure is very important which can even affect the cooling performance a lot.

STEP 2 >



Ensure that all four push-pins are turned in the opposite direction of the arrow (picture B). Place the cooler on the CPU aligning the push pins into the securing position on the motherboard (Picture C and D).

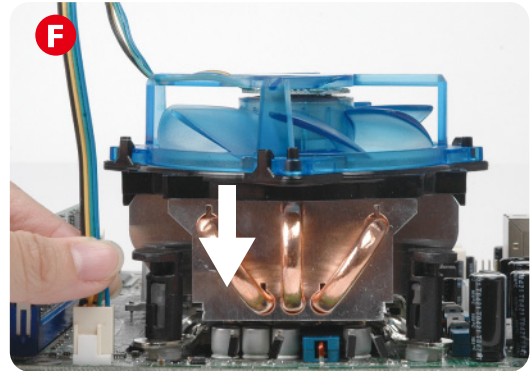
STEP 3 >



Clip attachment

Placing one hand on the cooler to hold it in position, use the other hand to secure the pins by pushing them down (Picture E) until a locking click is felt or heard from each one (secure the push-pins in a crosswise manner).

STEP 4 >



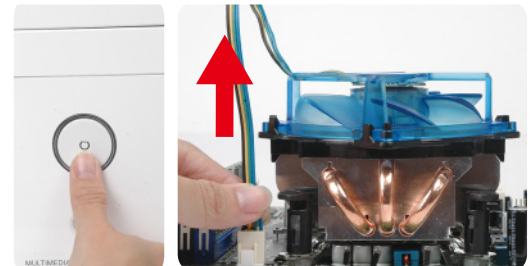
Connect the CPU cooler fan to the motherboard power connector marked CPU FAN. This connector is keyed so the power lead can only be installed one way. If a connector marked CPU FAN is not apparent on the board, check the motherboard manual for fan connection information.

Uninstall Manual

⚠ WARNING

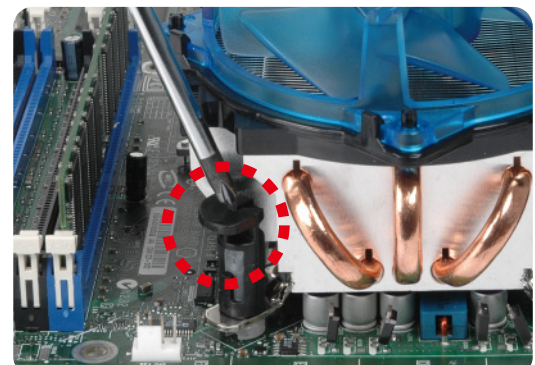
Improper Installation will result in damage to the processor. Never switch on the computer system until the fan is connected on to the motherboard power connector.

STEP 1 >



Make sure the PC is turned off and disconnect the fan from motherboard power connector (placing the PC in horizontal position is recommended).

STEP 2 >



Turn the pins in the direction indicated by the arrows (using a flat head screwdriver is recommended).

STEP 3 >

Take off the cooler by lifting it up gently. If the cooler still seems to be secured, try to ease the pins by retracting each pin individually.